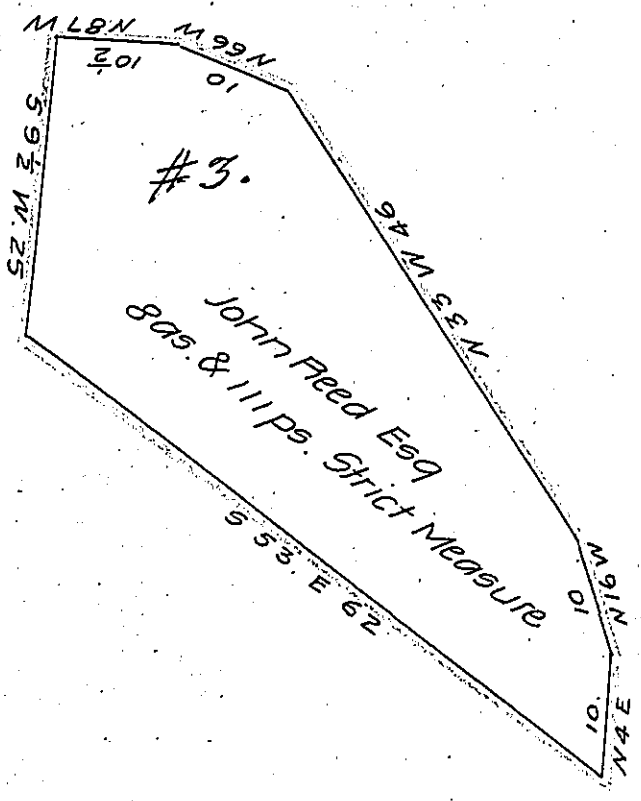


York County



Lancaster County

A Draught of an Island situate in the river Susquehanna
 Called Feeds Island No. 3, between Feeds Island No. 1 and Hil-
 gores Fish dam in Martick Township Lancaster County Contain-
 ing Eight acres and one hundred and eleven perches strict Mea-
 sure Surveyed in pursuance of a Warrant dated the 21st day of
 April 1813, unto John Reed, November the 8th A. D. 1813.

Per

Jacob Hibshman D.S.

To Andrew Porter Esq
 Surveyor General

IN TESTIMONY that the above is a copy of the original remaining on file in
 the Department of Internal Affairs of Pennsylvania, made
 conformably to an Act of Assembly approved the 16th day of
 February, 1833, I have hereunto set my Hand and caused
 the Seal of said Department to be affixed at Harrisburg,
 this twentieth day of September 1906

Loe D Brown
 Secretary of Internal Affairs.